

Notes

Sign & Lines Key

- Non-illuminated traffic sign (refer to Sign Schedule).
- Illuminated traffic sign (refer to Sign Schedule).
- Sign to be removed (refer to Sign Schedule).
- Sign position and orientation (one post).
- Road marking TSRGD 2016 Diagram number.
- Existing lamp column.

0	27/02/2024	FIRST ISSUE	DW	LG	WB
Rev	Revision Date	Purpose of revision	Drawn	Checked	App'd

Kent County Council
kent.gov.uk

Kent County Council
Ashford Highway Depot
Henwood Industrial Estate
Ashford
TN24 8AD
Tel: 03000 418181

Project

BOUGHTON LEES

PROPOSED 20 MPH SPEED LIMIT

Drawing title

TRAFFIC SIGN LAYOUT

SHEET 1 OF 4

Drawing status

DETAILED DESIGN

Scale

1:500 at A3

Do not scale

Drawing number

23-AS-PAR-777-1201

Rev

0

This drawing is not to be used in whole or part other than for the intended purpose and project as defined on this drawing. Refer to the contract for full terms and conditions.

Sign & Lines Key

- LC
- Existing lamp column.
- Non-illuminated traffic sign (refer to Sign Schedule).
- Illustrated traffic sign (refer to Sign Schedule).
- Sign to be removed (refer to Sign Schedule).
- Sign position and orientation (one post).
- Road marking TSRGD 2016 Diagram number.



Kent County Council
Ashford Highway Depot
Henwood Industrial Estate
Ashford
TN24 8AD
Tel: 03000 418181

Tel: 03000 418181

Project
BOUGHTON LEES

PROPOSED 20 MPH SPEED LIMIT

Drawing title

TRAFFIC SIGN LAYOUT
SHEET 2 OF 4

Drawing status

DETAILED DESIGN

Scale	
1:500 at A3	Do not scale

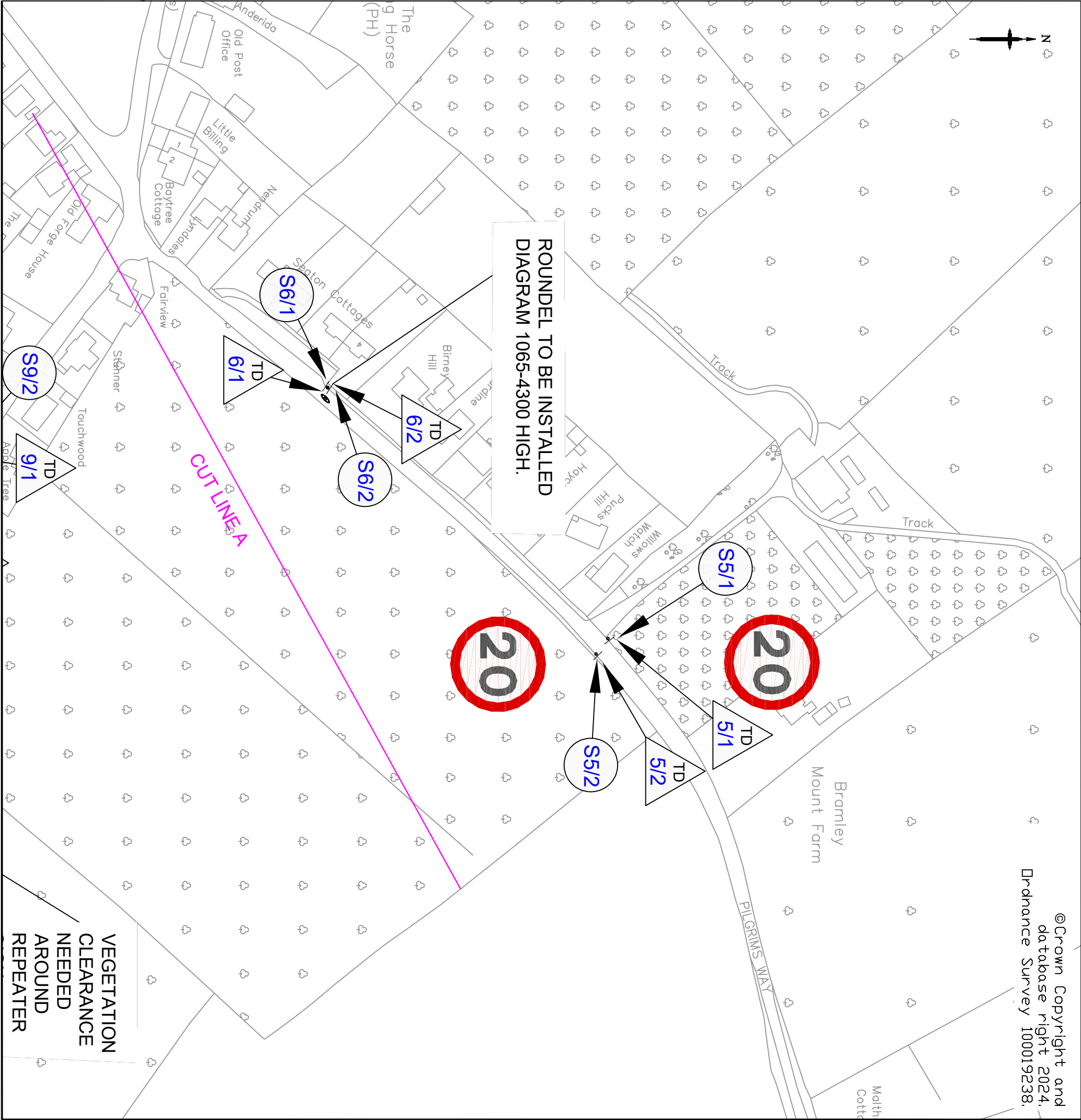
Drawing number

23-AS-PAR-777-1202

0

This drawing is not to be used in whole or part other than for the intended purpose and project as defined on this drawing. Refer to the contract for full terms and conditions.

©Crown Copyright and
database right 2024.
Ordnance Survey 100019238.



Notes

Sign & Lines Key

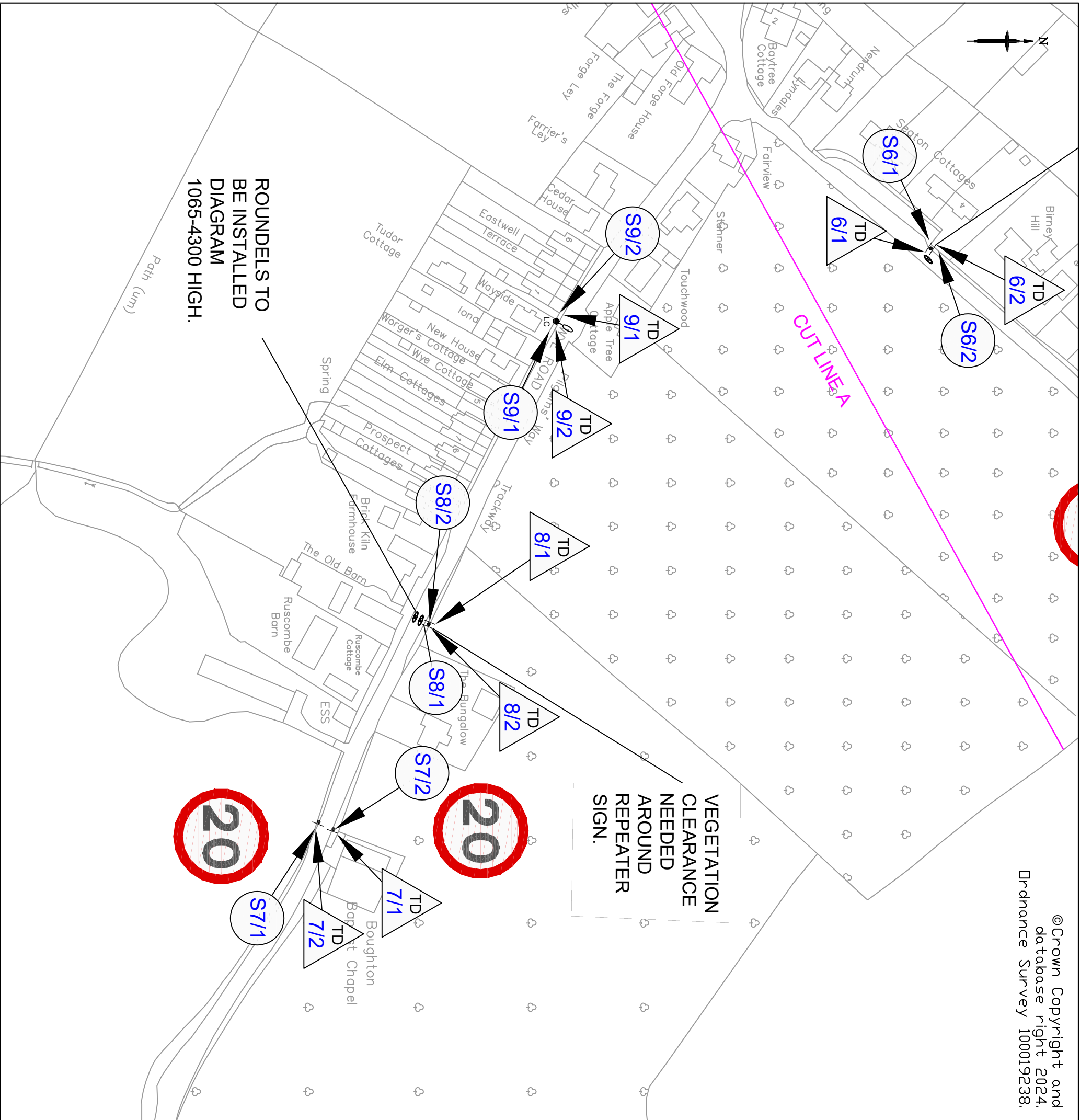
- Non-illuminated traffic sign (refer to Sign Schedule).
- Illuminated traffic sign (refer to Sign Schedule).
- Sign to be removed (refer to Sign Schedule).
- Sign position and orientation (one post).
- Road marking TSRGD 2016 Diagram number.
- Existing lamp column.
- LC

0	07/03/2024	FIRST ISSUE	DW	LG	WB
Rev	Revision Date	Purpose of revision	Drawn	Checked	App'd



Kent County Council
Ashford Highway Depot
Henwood Industrial Estate
Ashford
TN24 8AD
Tel: 03000 418181

Project		
BOUGHTON LEES		
PROPOSED 20 MPH SPEED LIMIT		
Drawing title		
TRAFFIC SIGN LAYOUT		
SHEET 3 OF 4		
Drawing status		
DETAILED DESIGN		
Scale	1:1000 at A3	Do not scale
Drawing number	23-AS-PAR-777-1203	Rev
		0
This drawing is not to be used in whole or part other than for the intended purpose and project as defined on this drawing. Refer to the contract for full terms and conditions.		



©Crown Copyright and
database right 2024.
Ordnance Survey 100019238.

Notes

Sign & Lines Key

- Non-illuminated traffic sign (refer to Sign Schedule).
- Illuminated traffic sign (refer to Sign Schedule).
- Sign to be removed (refer to Sign Schedule).
- Sign position and orientation (one post).
- Road marking TSRGD 2016 Diagram number.
- Existing lamp column.

0	07/03/2024	FIRST ISSUE	DW	LG	WB
Rev	Revision Date	Purpose of revision	Drawn	Checd	App'd



Kent County Council
Ashford Highway Depot
Henwood Industrial Estate
Ashford
TN24 8AD
Tel: 03000 418181

Project

BOUGHTON LEES

PROPOSED 20 MPH SPEED LIMIT

Drawing title

TRAFFIC SIGN LAYOUT

SHEET 4 OF 4

Drawing status

DETAILED DESIGN

Scale

1:1000 at A3

Do not scale

Drawing number

23-AS-PAR-777-1204

Rev

0

This drawing is not to be used in whole or part other than for the intended purpose and project as defined on this drawing. Refer to the contract for full terms and conditions.